

# TITAN<sup>®</sup>

THE ART OF BUILDING



PRODUCT

# Catalog

[titanbuildingproducts.com](http://titanbuildingproducts.com)





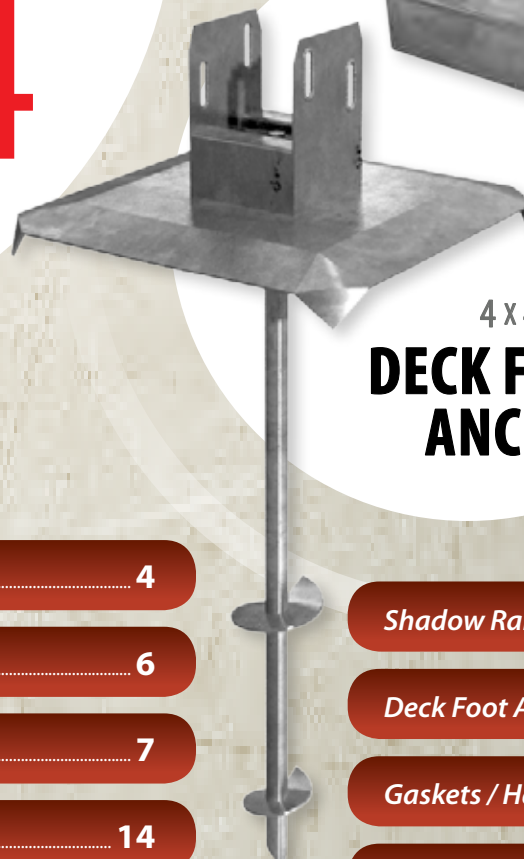
# catalog *contents*



**4**  
4x4 / 6x6  
**POST ANCHORS**



**20**  
CONNECTOR  
**SHADOW RAIL**



**23**  
4x4 / 6x6  
**DECK FOOT ANCHOR**

*HomeLine and ProLine* ..... **3**

*4x4 / 6x6 Post Anchor HomeLine* ..... **4**

*4x4 Post Anchor ProLine* ..... **6**

*6x6 Post Anchor ProLine* ..... **7**

*Metal Post Skirts* ..... **14**

*Wood Post Skirts* ..... **16**

*Metal Post Caps* ..... **18**

*Aluminum Post Caps* ..... **19**

*Shadow Rail* ..... **20**

*Deck Foot Anchor* ..... **23**

*Gaskets / Hammer Tool* ..... **23**

*Hole Saws / Center Guides* ..... **31**

*Titan - About Us* ..... **32**

*Shipping* ..... **34**

**TITAN®**



With two product lines to serve you,  
*anyone can experience*  
**THE ART OF BUILDING**



## Affordability.

When you need to get a simple job done around the house but you want style that meets your budget, choose the **Titan Home Line**.



## Reliability.

When you want more style, more beauty, more performance and code compliance where needed, choose the **Titan Pro Line**.

*"Behind every Titan product is unique and sometimes even non-conventional thinking."*

**TITAN**<sup>®</sup>  
THE ART OF BUILDING

You'll find elegant solutions that simplify your task, add value to your investment and delight you.

Whether you just picked up a hammer or you are an experienced professional, now you can build faster, easier, and more efficiently.



# 4x4 / 6x6 | POST ANCHOR

USE ON DECKS OR SURFACES LESS THAN 30" ABOVE GROUND (24" CANADA).



home  
LINE

POWDER COATED

Affordable beauty that suits  
*your job and your budget.*

6X6 REQUIRES:  
1 1/4" HOLE SAW

4X4 REQUIRES:  
1" HOLE SAW



## 4"x 4" / 6"x 6" Titan Post Anchor

Fits 3 1/2" and 5 1/2" square posts.  
Lag and deck screws  
sold separately.

4X4

6X6

TIHM463

TIHM663

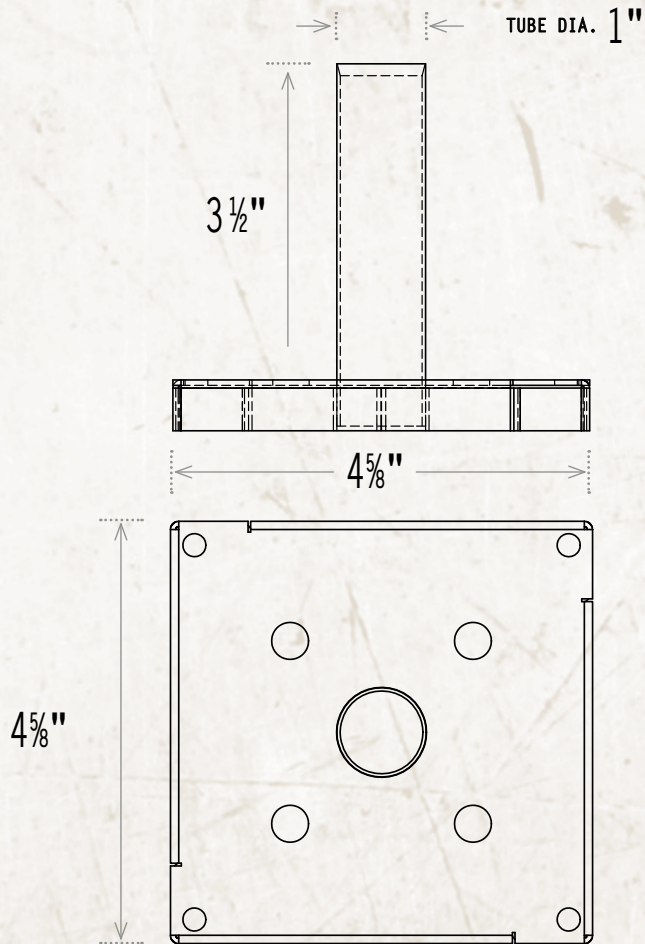
24 per case

16 per case

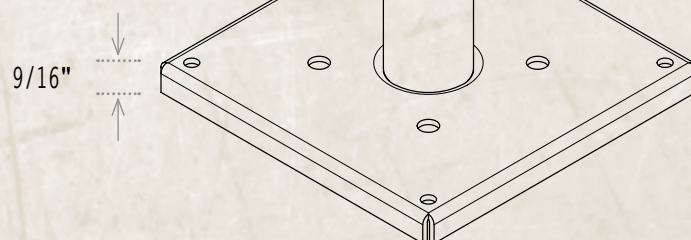
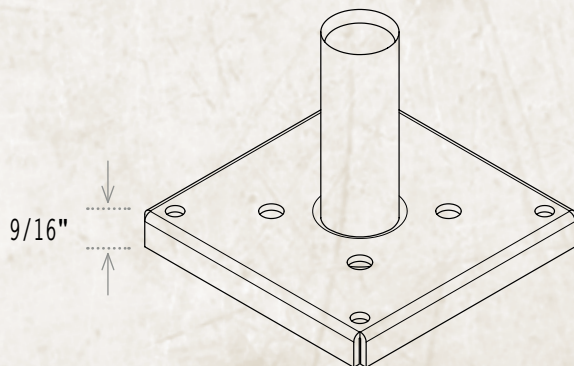
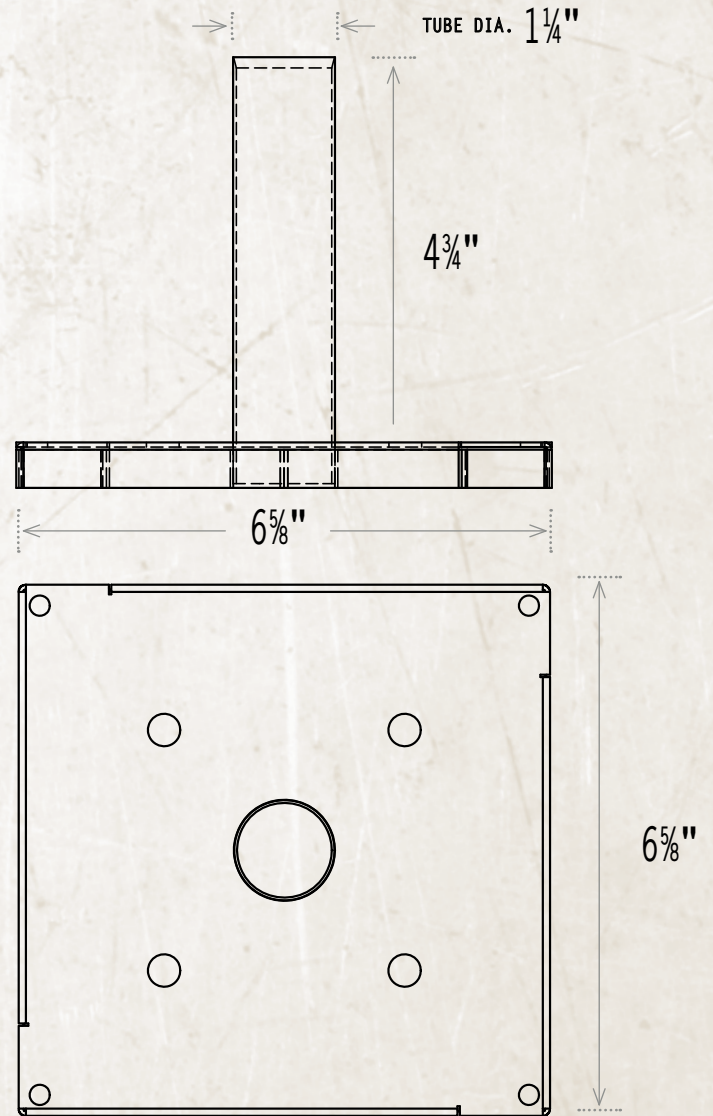


# SPECIFICATIONS | POST ANCHOR

4x4 POST ANCHOR



6x6 POST ANCHOR







# 4x4 | POST ANCHOR

**High Quality!** *"Very good product... mounts posts as needed. I would recommend this product to others... Fast shipping...high quality"* **Craig Hamrick** - Glen Rock, PA



HOT ZINC / POWDER COATED

316 GRADE STAINLESS STEEL

Simple, elegant, beautiful, strong  
*and they really work.*

## 4"x 4" Titan Post Anchor Kit

FITS 3 1/2" TO 4" SQUARE POSTS. ACQ COMPATIBLE.  
ENGINEERED FOR U.S. (AC273) AND CANADIAN (CBC)  
RESIDENTIAL CODE COMPLIANT WOOD RAILINGS.  
SEE CODE GUIDANCE IN INSTALLATION INSTRUCTIONS.

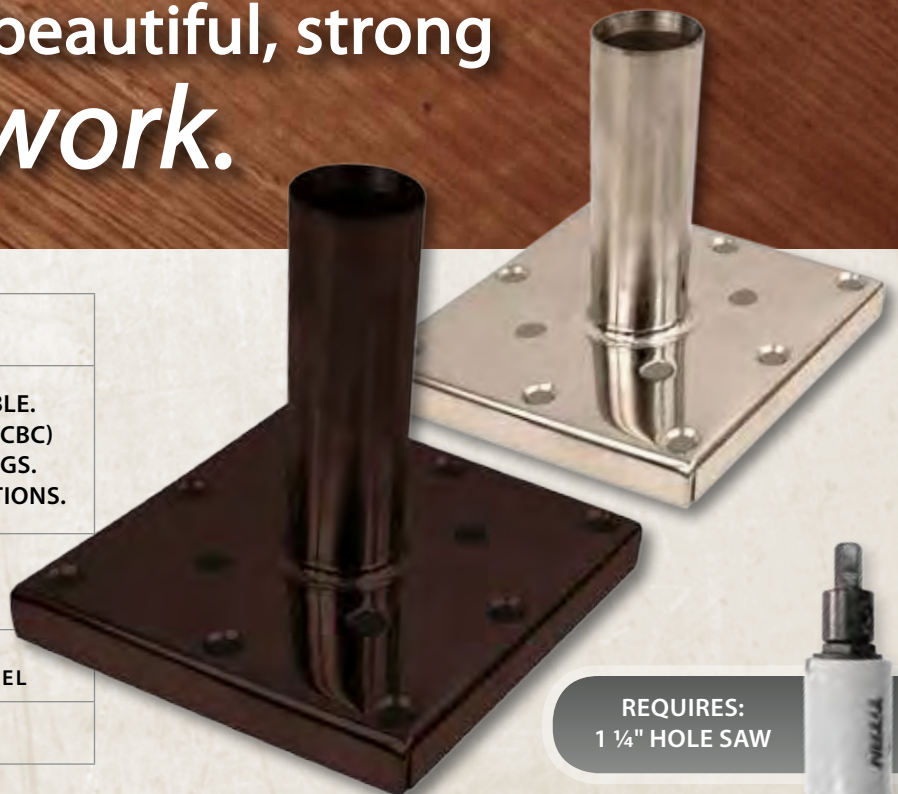
Includes: (4) 3/8" X 5" lag screws,  
(8) #14x3 wood screws, (1) post anchor

HOT ZINC /  
BLACK POWDER COATED

316 GRADE  
STAINLESS STEEL

TIPR4412

TIST4412

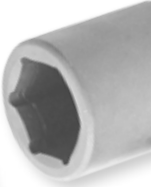


REQUIRES:  
1 1/4" HOLE SAW





# 6x6 | POST ANCHOR



HOT ZINC / POWDER COATED

Railings, pergolas and support columns are  
*easy work with the 6x6 anchor.*

## 6"x 6" Titan Post Anchor Kit

FITS 5 1/2" TO 6" SQUARE POSTS.  
ACQ COMPATIBLE. ENGINEERED FOR U.S. (AC273) AND  
CANADIAN (CBC) RESIDENTIAL CODE COMPLIANT WOOD RAILINGS.  
SEE CODE GUIDANCE IN INSTALLATION INSTRUCTIONS.

Includes: (4) 3/8"x5" lag screws, (8) #14x3 wood screws, (1) post anchor

HOT ZINC / BLACK POWDER COATED

TIPR6612



REQUIRES: 1 3/4" HOLE SAW





## **Best Surface Mount Period!**

*"Installing them was quick and easy. It is the best method to mount posts to your deck. You won't be disappointed."*

**Jeremy Begik** - Bay City, MI



# WHY CUSTOMERS CHOOSE THE TITAN POST ANCHOR *for their building projects:*

## ***They add amazing strength...***

*"They add amazing strength to the gazebo. The 14' gazebo with 6x6 posts has no bottom rails and is incredibly strong with them. I am still so glad we discovered them."*

**Jay Leis** - Brunner, ON

## ***Anyone can do it...***

*"I'm 76 and she's 71 and it feels good to complete a project while adding value to our retirement home at the same time. I'm glad I found your product."*

**John Campbell** - Melbourne Beach, FL

## ***It was perfect!***

*"This product was perfect. Attachment of the post anchor a breeze. Once installed, the post was as solid as anything else I've ever tried in attaching posts for a deck. Will definitely use again and recommend to all."*

**Al Stevens** - Batesburg, SC



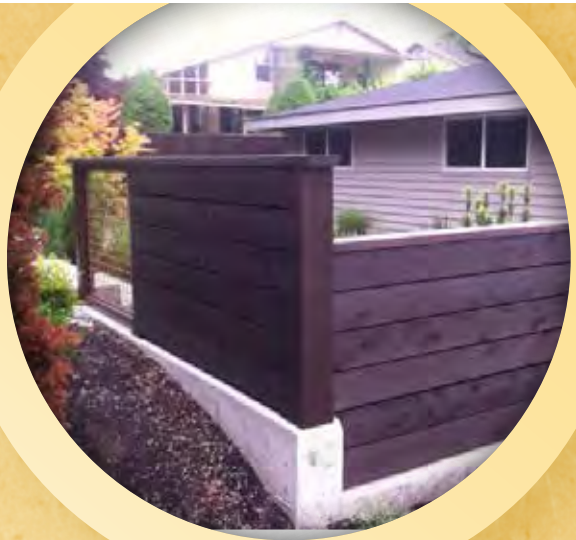


## A Wonderfully Designed Product

*Wonderfully designed product with great instructions. I was decking over an old concrete patio and needed some way to anchor the railing posts that would be sturdy. It's the only one out there that seemed like it would do the job, and it did.*

*Thanks for making a brilliant product!*

**Kristen Isaacs** - Canton, MA



## Now I Am Sold

*Mounted the first post anchor and was sold, installation is simple and time is definately saved. This is a great alternative to all other expensive bases. I have used my share of the expensive bases and this is by far the best for your money.*

**Dumette Construction LLC** - Gilmanton, NH



## Five Star Deck Fix!

*Without a doubt – my five star deck fix! I searched high and low looking for an alternate way to attach deck posts. The Titan post anchors allowed me to position my posts in the exact location I desired giving my deck the best form, fit, and function. I would absolutely buy these again!*

**Jared Evans** - Fort Wayne, IN



## Innovative...

*We used the 6x6 post anchor to secure structural pergola posts on masonry columns. This allowed us to fasten the cedar columns to the stone pedestals with aesthetic and structural confidence! Thank you for a great innovative product in the Titan Post Anchor.*

**R. Macek** - Macek Custom Builders, OH



**Email us a photo and a quick testimonial of your finished project and we'll send you a**

**FREE GIFT!**

**EMAIL US**

**sdugdale@titanbuildingproducts.com**



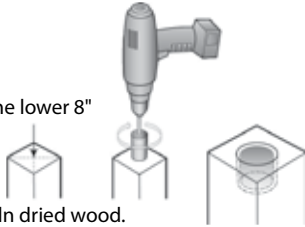
# INSTALLATION | POST ANCHOR

## SOFTWOOD

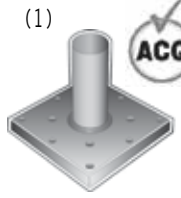
1

No knots in the lower 8" of the post.

Do not use Kiln dried wood.



(1)



Titan Post Anchor™

(4)



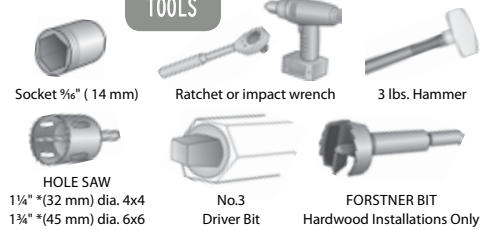
LAG SCREW  
3/8" x 5"

(8)

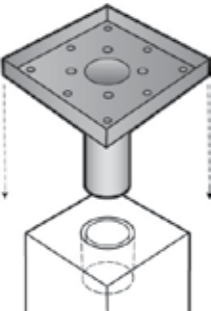


WOOD SCREW  
#14 x 3"  
No. 3 Square drive

### TOOLS



2

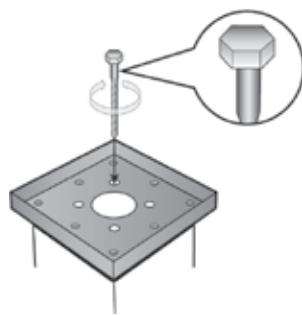
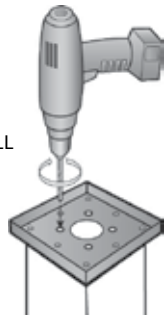


1 7/8"

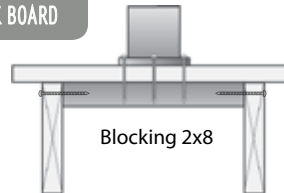


3

PRE-DRILL

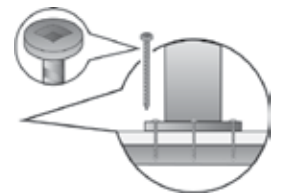


### DECK BOARD



Blocking 2x8

Joists



### PRE-DRILLING GUIDE

LAG SCREW	SOFTWOOD	HARDWOOD
5/16"	3/16"	9/32"
3/8"	1/4"	1 1/32"

### INSTALLING RESIDENTIAL GUARDS

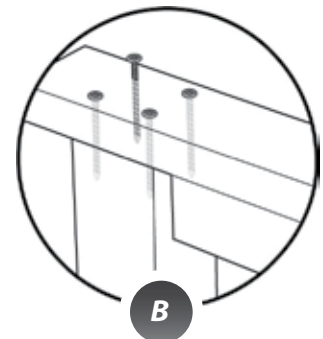
This product has been independently tested according to established AC 273 procedures set out in the IRC for the USA and CBC for Canada. It can be used as a code compliant post anchoring component in one and two family residential guard rail applications when installed according to these directions and conditions of use.

USA	CANADA
Max rail height 36" ( 42" California )	Max rail height 42"
Max 4x4 post spacing 6' ( 4' California, 6' if Power Bolt (chicago bolt) used )	Max 4x4 post spacing 6' o.c.
Max 6x6 post spacing 8' ( 7' California )	Max rail length from fixed end ( corner ) to fixed end 36' ( 4x4 ), 42' ( 6x6 )
	Max rail length from fixed end to unfixed end 18' ( 4x4 ), 21' ( 6x6 )
MATERIALS	
Use SPF lumber for posts and 2" blocking screwed between joists below each post.	
Use fasteners included in package. Attach top rail to posts as shown in post to rail detail A or B.	

### POST TO RAIL DETAIL

( 5 ) No. 10 x 3 1/2"

( 4 ) No. 10 x 3 1/2"



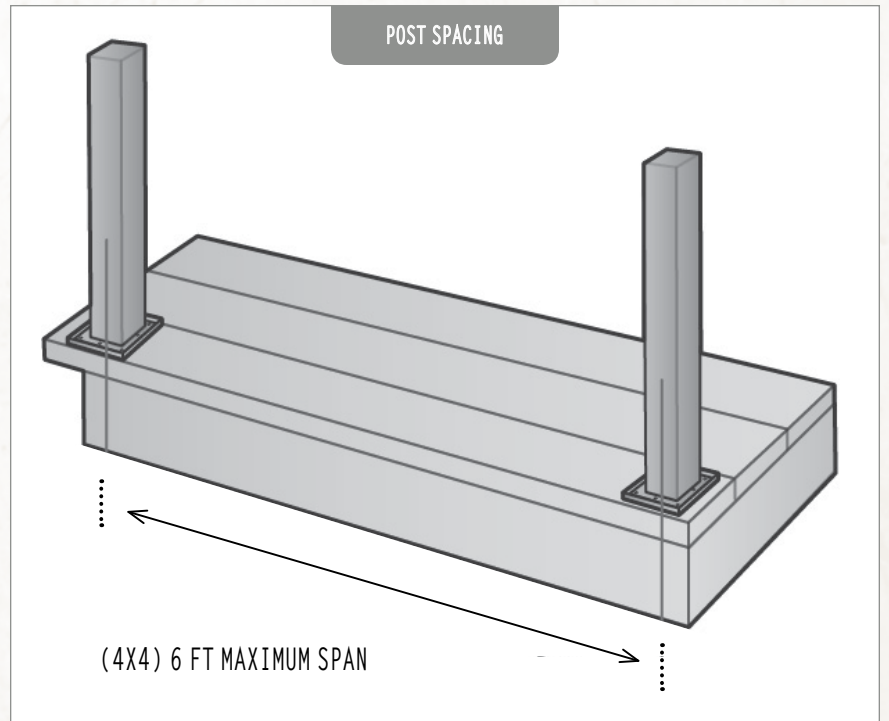
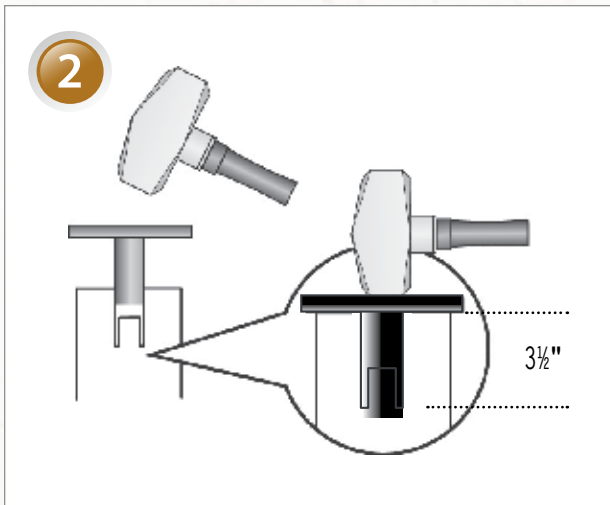
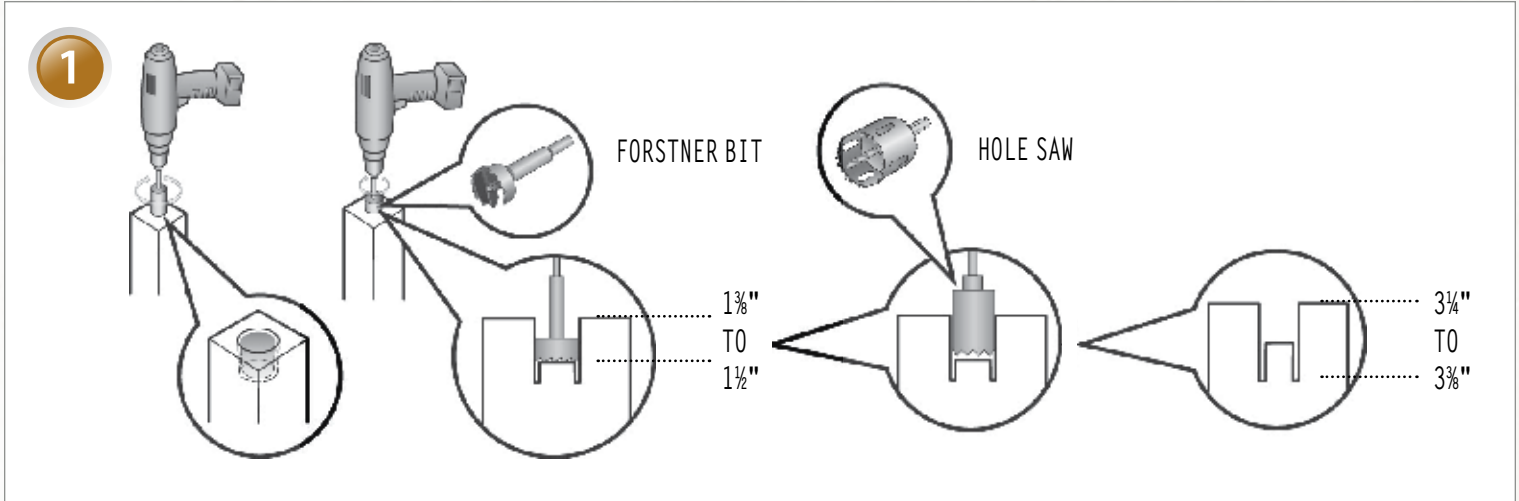
THE ART OF BUILDING



# INSTALLATION

# POST ANCHOR

## HARDWOOD



WATCH  
HOW-TO  
VIDEO



THE ART OF BUILDING

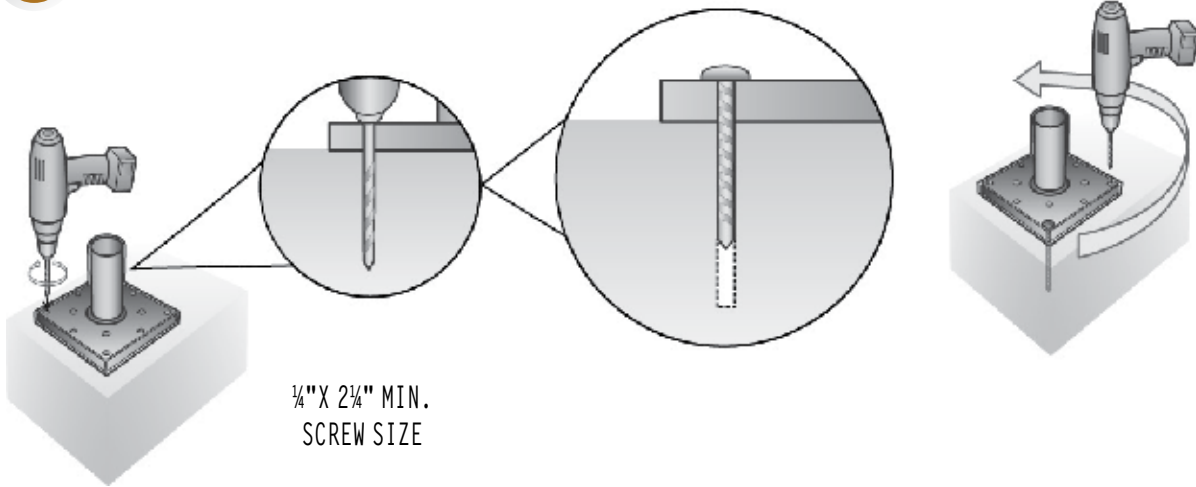


# INSTALLATION | POST ANCHOR

**CONCRETE\***

1

PRE-DRILL



\*Concrete screws sold separately

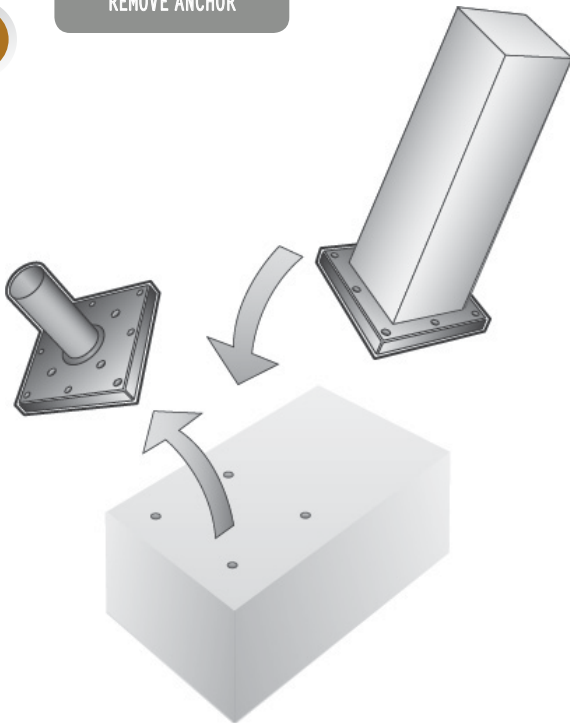


WATCH  
HOW-TO  
VIDEO



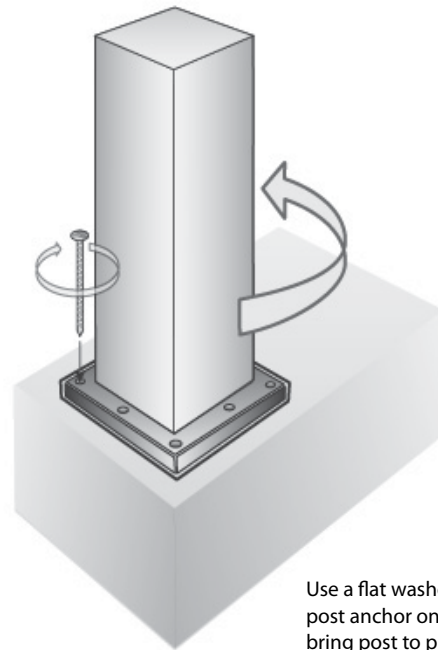
2

REMOVE ANCHOR



3

INSTALL SCREWS



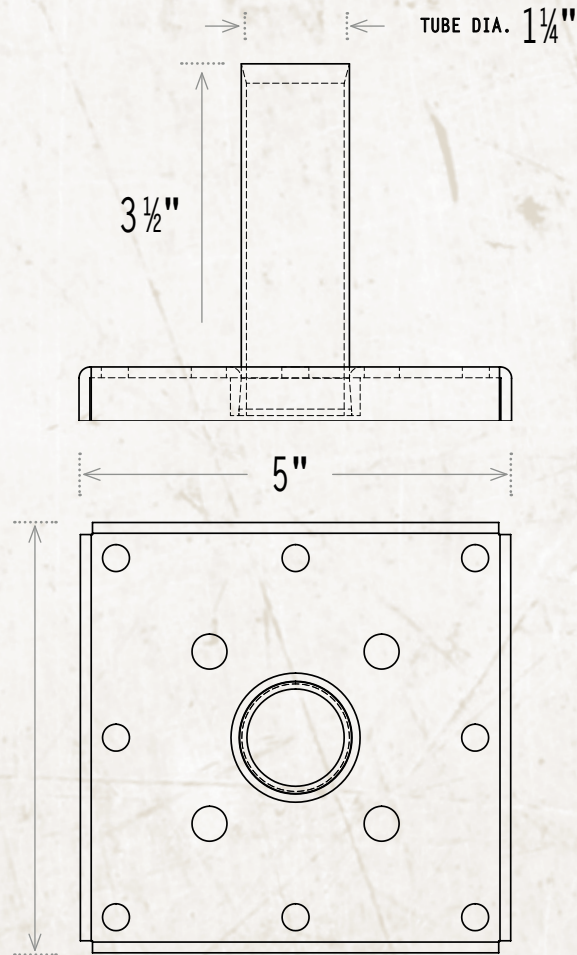
Use a flat washer under corners of post anchor on the lower side to bring post to plumb position for sloped concrete surfaces.

THE ART OF BUILDING

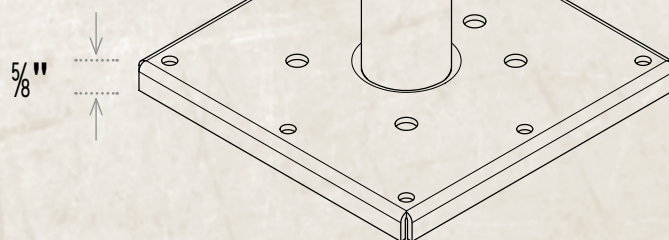
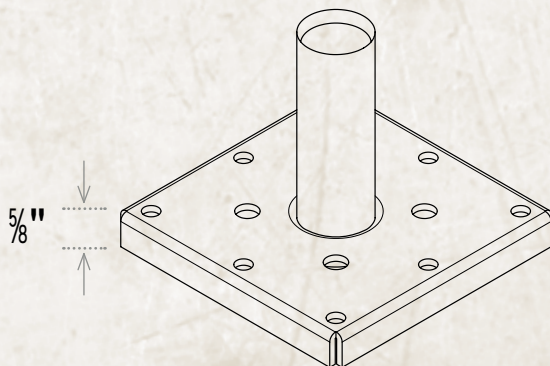
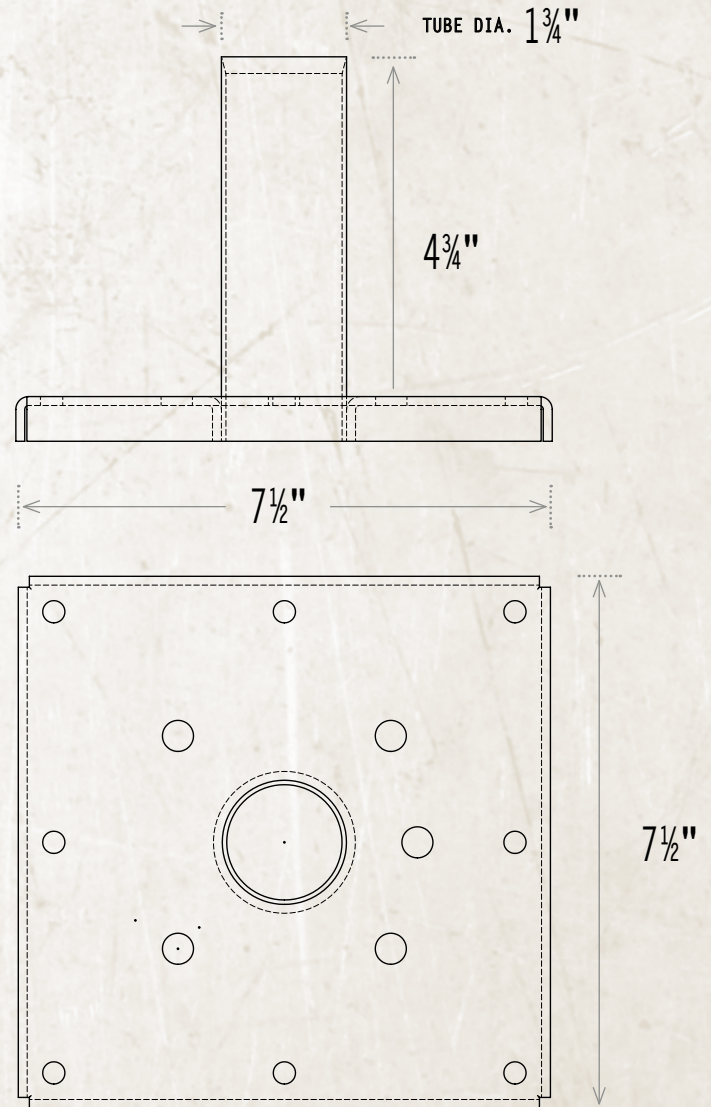


# SPECIFICATIONS | POST ANCHOR

4x4 POST ANCHOR



6x6 POST ANCHOR





# METAL | POST SKIRTS



GRAY

BLACK

WHITE

BROWN

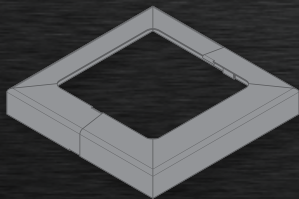
COPPER

STAINLESS

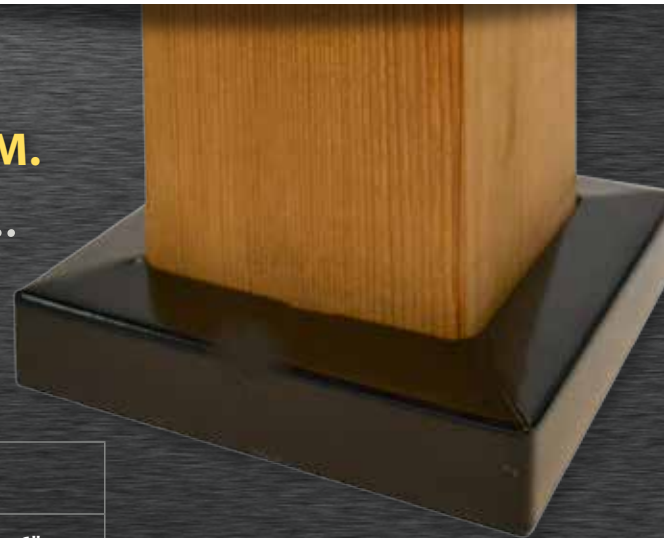
*"The finishing touch to any post."*

**A WIDE VARIETY TO CHOOSE FROM.**

*Align it, click it...*



*done.*



Post opening size						
3 1/2"	4"	4 1/4"	4 5/8"	5 1/2"	6"	
SKBL44	SKBL400	SKBL425	SKBL462	SKBL66	SKBL462	BLACK
SKWH44	SKWH400	SKWH425	SKWH462	SKWH66	SKWH462	WHITE
SKGR44				SKGR66		GRAY
SKBR44				SKBR66		BROWN
SKC044				SKC066		COPPER
SKST44				SKST66		STAINLESS

*Sold In any quantity.*

INSTALLATION IS A  
**'SNAP'**





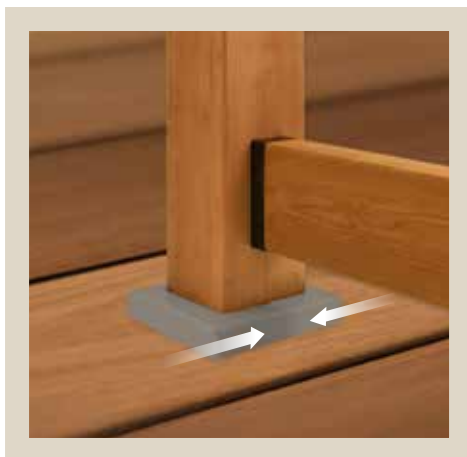
# INSTALLATION | METAL POST SKIRTS

1

Peel and stick small pieces of foam tape against opposing inside faces of post skirts. Place opposing pieces of post skirt around post with the joint connection underneath the bottom rail.

2

Align metal tabs and snap fit together.



We offer choice and *size flexibility.*

You can use our new post skirt sizes with any of the post sleeves from manufacturers like **Fibron**, **Timbertech**, **Trex**, **Deckorators** and more.

Also useful with **true 4" x 4" and 6" x 6" wood posts.**

*Sold in any quantity. 12 per case.*

A large photograph showing various post skirts and sleeves. On the left, two white post sleeves are shown with black skirts. On the right, two black post sleeves are shown with white skirts. The skirts are shown both installed on the sleeves and as separate pieces.



# WOOD | POST SKIRTS

## WESTERN RED CEDAR

### Posts Skirts Western Red Cedar

DESIGNED AND AVAILABLE IN 4 OPENING SIZES:

3 ½"	4"	5 ½"	6"
SKCD3510	SKCD4410	SKCD5510	SKCD6610

*Sold in any quantity. 10 per case.*

## TREATED PINE

### Posts Skirts Treated Pine

DESIGNED AND AVAILABLE IN 4 OPENING SIZES:

3 ½"	4"	5 ½"	6"
SKTP3510	SKTP4410	SKTP5510	SKTP6610

*Sold in any quantity. 10 per case.*

*"What a Titan Post Anchor  
would wear to dinner."*

INSTALLATION IS A '**SNAP**'



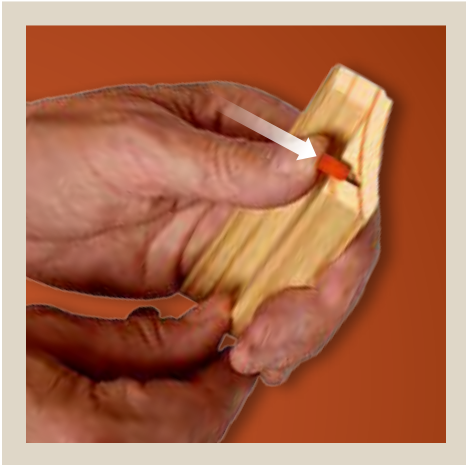
THE ART OF BUILDING



# INSTALLATION | WOOD POST SKIRT

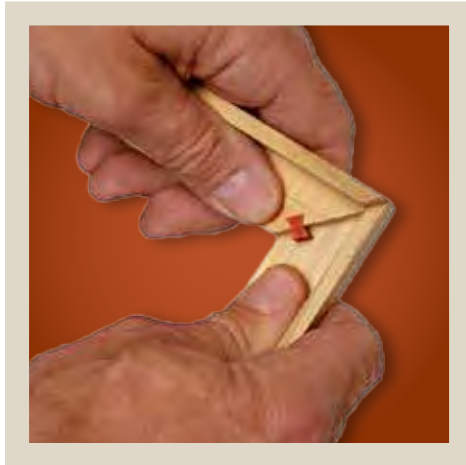
1

Slide dovetail keys into grooves. Apply small amount of white glue on mating surfaces *if desired* or *dry fit* only.

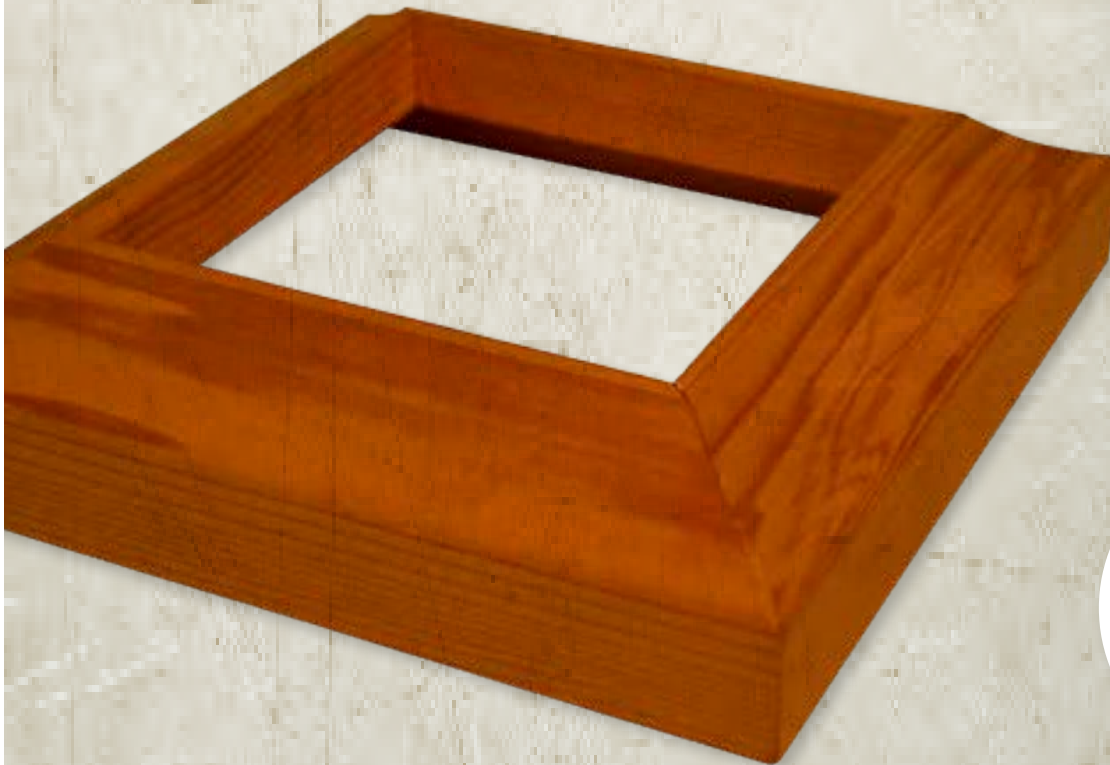


2

Align grooves with dovetail key and slide together.



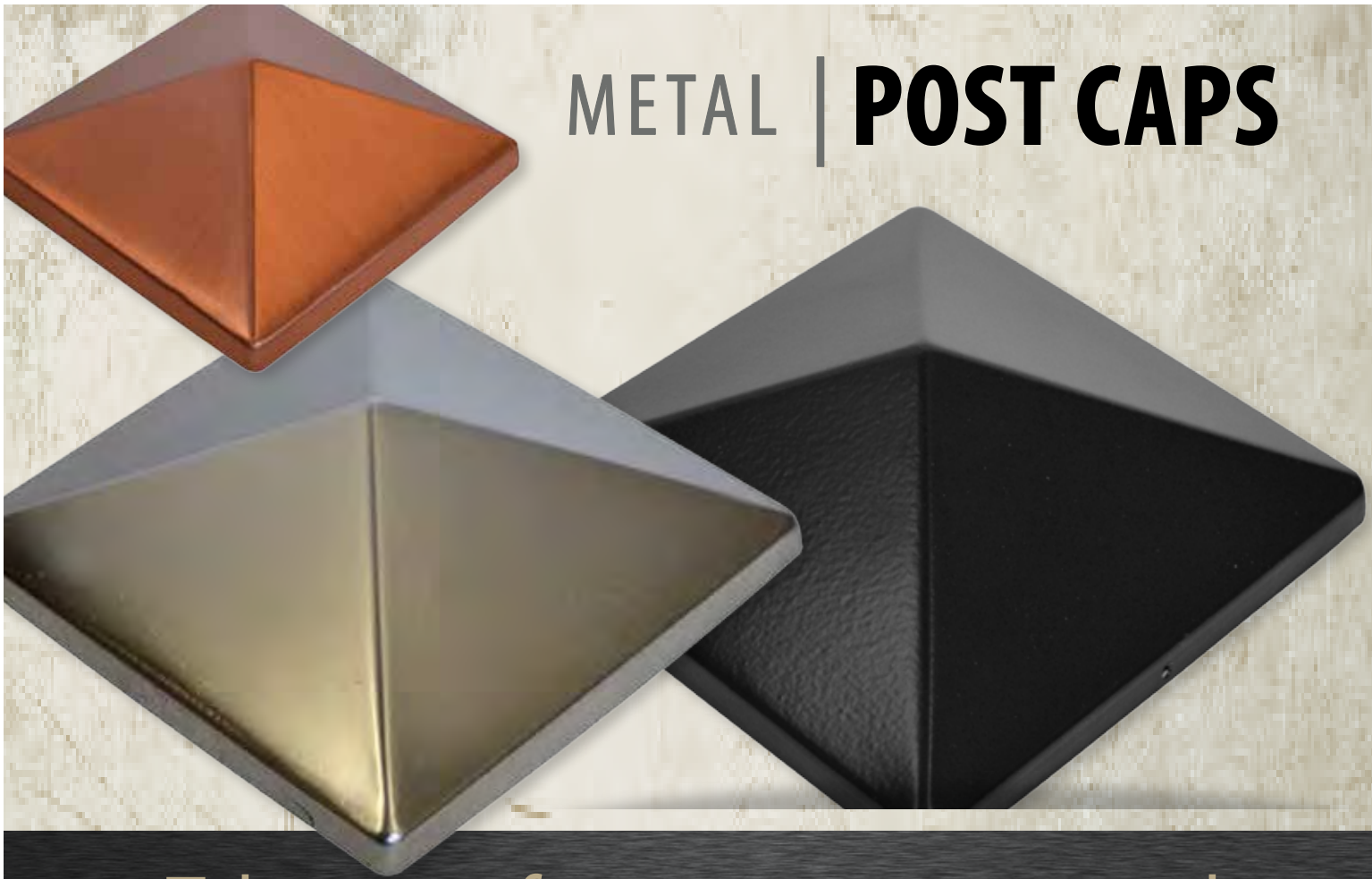
INSTALLATION IS A **'SNAP'**



THE ART OF BUILDING



# METAL | POST CAPS



Take care of your customers needs...  
*from top to bottom.*

*Simple, durable and beautiful metal or cast aluminum caps extend post life and are the perfect companion to our popular Titan Post Anchors.*

Metal Pyramid Post Cap					
FOR 3 ½" X 3 ½" POSTS			FOR 5 ½" X 5 ½" POSTS		
BLACK	STAINLESS	COPPER	BLACK	STAINLESS	COPPER
PCBL35	PCST35	PCC035	PCBL55	PCST55	PCC055

*All metal post caps are galvanized. Sold In any quantity. 12 per case.*

BLACK

STAINLESS

COPPER



THE ART OF BUILDING



# 4x4 ALUMINUM | POST CAPS



# 6x6



BLACK POWDER COAT

## 4" x 4" Aluminum Post Cap

ALUMINUM POST CAP FITS UP TO A 3 5/8" POST

PCALBL35

*Sold in any quantity. 12 per case.*

## 6" x 6" Aluminum Post Cap

ALUMINUM POST CAP FITS UP TO A 5 5/8" POST

PCALBL55

*Sold in any quantity. 12 per case.*

*Durable and beautiful aluminum post caps extend post life and are the perfect companion to our popular Titan Post Anchors.*

THE ART OF BUILDING





# CONNECTOR | **SHADOW RAIL**

*The Shadow Rail hidden fastener 2x4 to post connector.*

*Over delivers in every sense. Looks - Simplicity - Toughness.*





WATCH  
HOW-TO  
VIDEO



<b>Shadow Rail Connector</b>
TISR24

*Sold in packs of 2. 20 per case. All screws included.*

**POLYCARBONATE**

Don't you just love it when a plan  
***clicks into place!***

THE ART OF BUILDING



### ***Just What We Needed***

*"This is just what we needed to complete our porch railing. We wanted to have the ability to offload large items right onto the porch. We can take this section of railing out, back up to the porch, and unload the truck. **These connectors** did the trick. Easy to install and not very obvious."*

**Monica Tarantino** - Walton, NY



CUSTOMERS LOVE

## **THE SHADOW RAIL CONNECTOR**

*Discover the value:*

### ***Second Times a Charm***

*"This is the second time I've used Shadow Rail for a deck railing project and they are excellent."*

**Todd Lovato** - Sante Fe, NM



### ***Easy to install***

*"They are a wonderful product, easy to install, strong, and we think they make for a nice, neat job."*

**Richard Pinover** - NY





# INSTALLATION

# SHADOW RAIL

1



Cut 2x4's 1 1/2" less than the space between the posts. Screw female parts to ends of 2x4's.

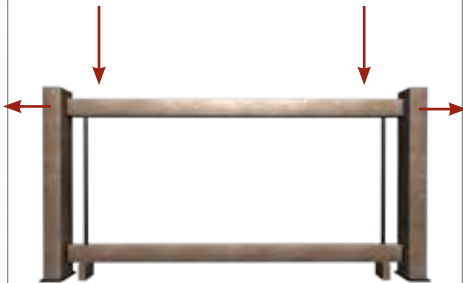
1



Slide male parts together with female parts.

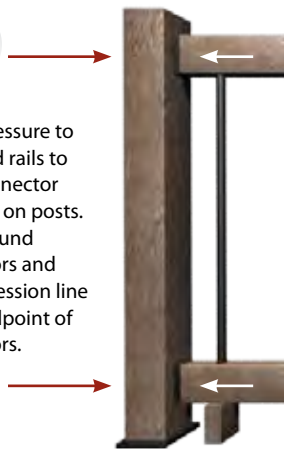
6

Cut off cones on bottom rail connectors to slide rail between posts. Push posts apart at top to fit top rail between posts.



4

Apply pressure to posts and rails to mark connector locations on posts. Trace around connectors and use impression line mark midpoint of connectors.



5

Take male parts and align them with impression/tracing marks on posts. Screw in place. Use short screw on lower hole if using TITAN Post Anchor.



A



B

6

Slide rails or completed rail section into male parts secured to posts.



7

Small screw not required if flat 2x4 cap rail is secured to posts. (#6 x 1/2" screws sold separately)



THE ART OF BUILDING



# 4x4 / 6x6 | DECK FOOT ANCHOR



The no-digging,  
no-cement, no sweat  
solution for  
*supporting  
free standing  
structures.*

**TITAN<sup>®</sup>**

DECK ANCHOR KITS  
AVAILABLE WITH 6X6  
POST BRACKET



## 4x4 / 6x6 Titan Deck Foot Anchor

THE DECK ANCHOR IS COMPRISED OF THREE PARTS:  
POST BRACKET, PLATE AND AUGER.

Drive helical auger into ground. Install compression deck  
plate. Tighten post bracket into place.

4X4 POST BRACKET	6X6 POST BRACKET	DECK PLATE	24" AUGER	36" AUGER
TIDP44	TIDP66	TIDKP	TIGA600	TIGA900





## **Best on the market**

*"The Titan Deck Foot Anchoring system is the best on the market. These anchors are simple and easy to install. Just use a 1/2" Electric Impact Wrench to install. Highly recommend these to any home owner and contractor that builds decks of all kinds and sizes."*

**Lonnie Hale** - Fort Payne, AL



# OUR CUSTOMERS LOVE THE DECK FOOT ANCHOR

## **My neighbors were in awe.**

*"Your product is fantastic. I had about 5 of my neighbors just in awe as I Installed 9 - 6x6 Post 24" Anchor Rod Deck Feet in less than 45 minutes. Hardest part was prepping and leveling of the surface before drilling these feet in with my impact wrench. My soil is very hard clay and they went down with no issues at all. The Terra Shift aspect makes a lot of sense so I don't see any issues with this floating deck system."*

**Ken Bacchus** - Toronto



## **The way to go**

*"These things are revolutionary... already planning my deck addition."*

**Kenneth Eldridge** - Guilford, CT





## Would Take an F5 Tornado...

*"I wanted to let you know that we received the shipment of Titan Deck Footings . Thus far I am VERY pleased with your product. I think it would take an F5 tornado to rip up what I've built so far. Seriously, I can't thank you enough. Your deck footings have saved me countless hours and effort."*

**Eric Tucker** - MA



## Definitely use them again...

*"Easy installation into clay. Twenty minutes for three deck foot anchors. Be sure to remove sod and add gravel to level the ground. I t was simple to drill down and then ratchet the nut tight. I was using them on a small 10'x8' deck. It is solid and secure. This product worked very well in this situation. No cement to mix is a nice benefit. I would definitely use them again."*

**Chris Collins** - Waterloo, ON

## Very Slick Idea...

*"Very slick idea and a lot less work than setting posts in concrete or using deck blocks. For my project I would have needed 60 bags of concrete or a lot of deck blocks. The Deck Foot is very light and the installation with an impact wrench goes very fast with minimal preparation. I used the 4x4 and would probably use the 6x6 next time to give some more room to notch posts."*

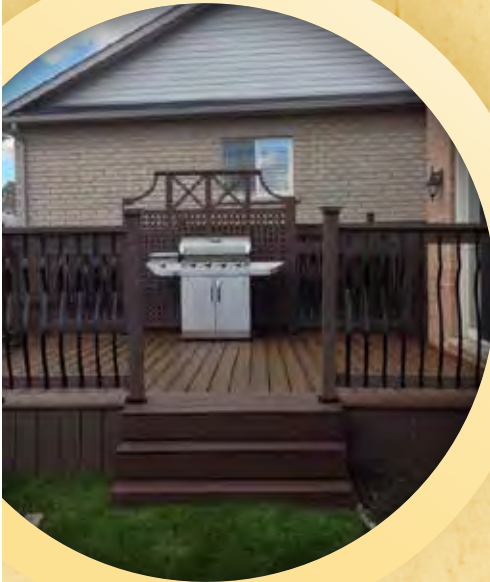
**Richard Todd** - Kitchener, ON



## Worked very well...

*"The anchors worked very well, only had one anchor that I had to crow-bar one rock out as I probably could have got away with the 24" anchors rather than the 36" ones that I ordered. But all said and done, worked well for our outdoor sauna."*

**Isabelle Jasper** - Paradise Hill, SK



Email us a **photo** and a **quick testimonial** of your finished project and we'll send you a

**FREE GIFT!**

**EMAIL US**

[sdugdale@titanbuildingproducts.com](mailto:sdugdale@titanbuildingproducts.com)

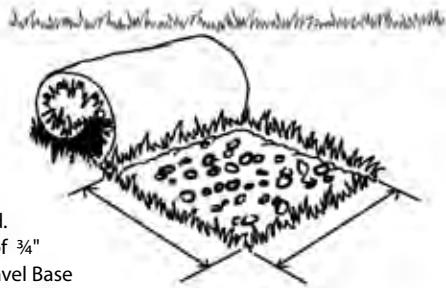


# INSTALLATION

# DECK FOOT ANCHOR

## PART 1 OF 2

1



Remove Sod.  
Add 2"– 3" of ¾"  
Crushed Gravel Base

### Deck Foot Anchor



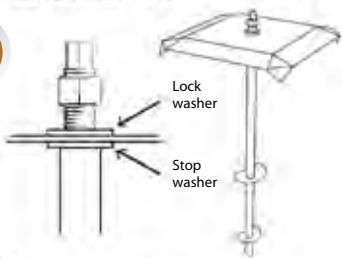
¼ x 3" lag screws. Sold separately.

### Tools needed



12 mm and 24 mm  
deep impact socket

2



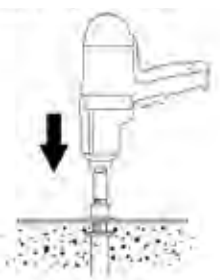
Assemble parts

3



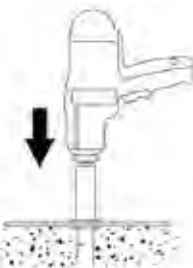
Drive Anchor down

4



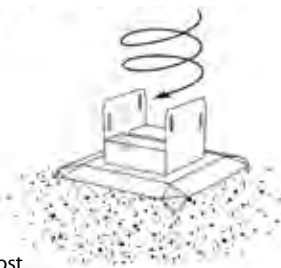
Stop when plate contacts  
ground and washer and nut  
contact top of plate

5



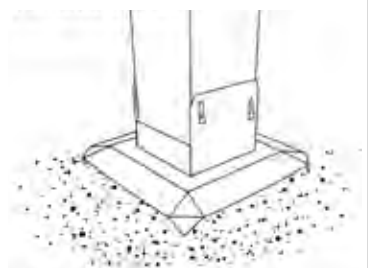
Use 24 mm socket  
and compress plate  
against top of stop  
washer.

6



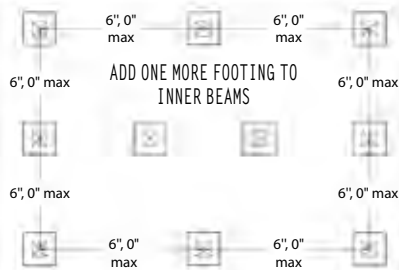
Attach a post

7



Install screw at  
bottom of each  
hole. Stop as soon  
as screw contacts  
bracket.

### HOUSE



ADD ONE MORE FOOTING TO  
INNER BEAMS

### LAYOUT GUIDE

Maximum spacing center to center 6'-0"	Maximum joist cantilever= Joist Length/4	Maximum beam cantilever= beam Length/4	Inner beams add one more footing than outer beams
--	--	--	---

<sup>1</sup> Based on soil bearing capacity of 1800 psf

### Joists on beam



### Hanging joists



### Post / Beam / Joist Bracing

2" min / 8", 0" max

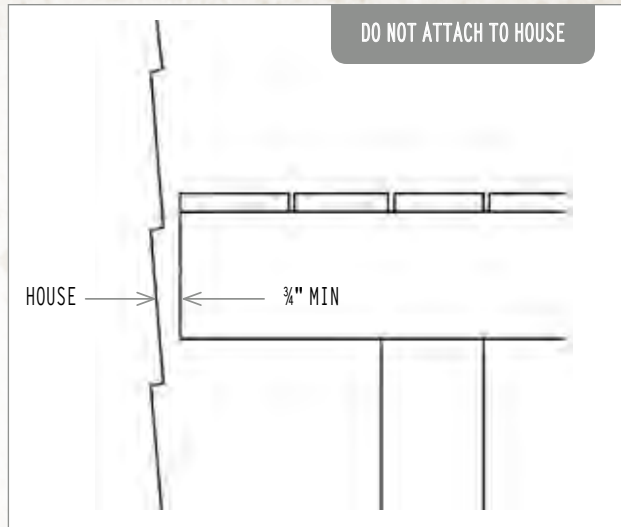
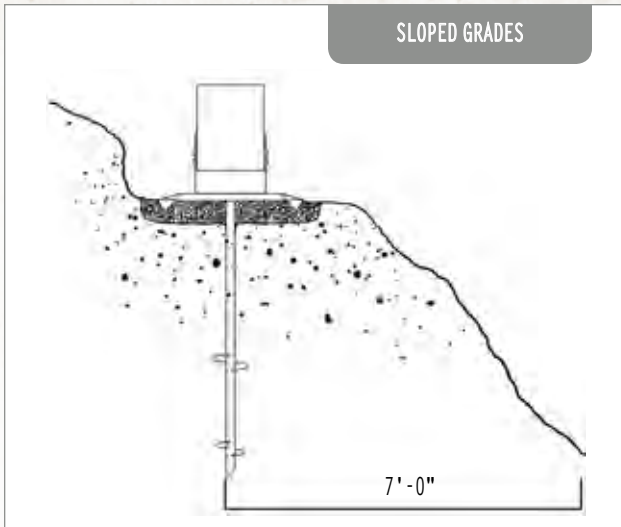
### Optional Deck Frame Bracing



THE ART OF BUILDING



## PART 2 OF 2



WATCH  
HOW-TO  
VIDEO

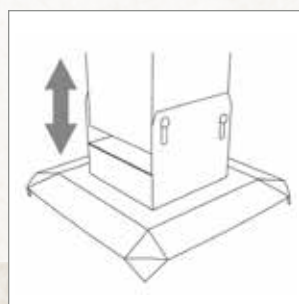
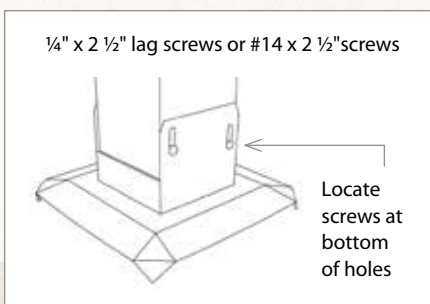
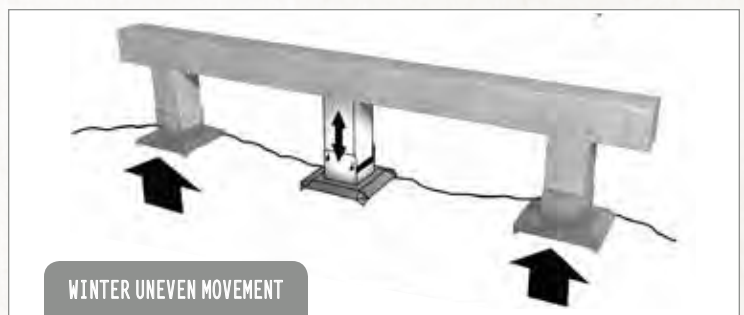


## Introducing *Terra-Shift™* "A SHOCK SYSTEM FOR YOUR DECK"

The *Titan Deck Foot™* uses our patented *Terra-Shift™* post bracket system to help keep soil around the anchor undisturbed and prevent damage to all post and beam and other structural connections.

### Here is how it works:

The fastener slide holes reduce friction between the post and bracket just enough so that if the soil shifts or expands unevenly along a series of footings under a beam, the post is free to slide vertically and then settle back to normal. It's like a shock absorbing system for your deck.

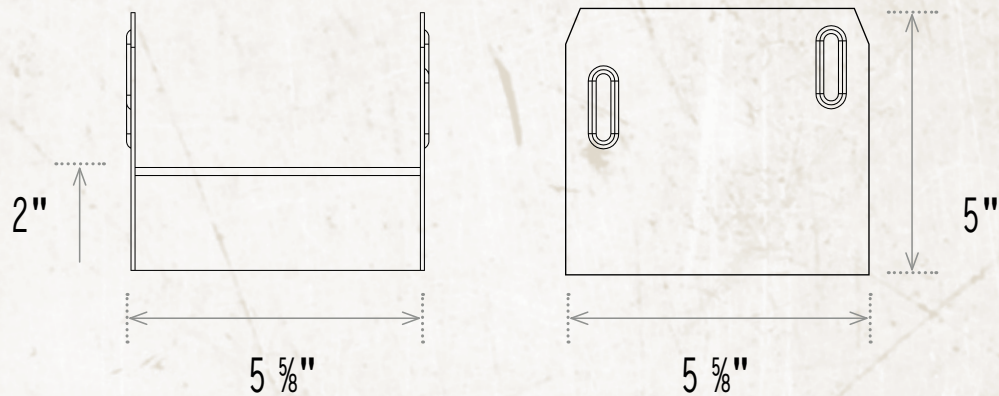


THE ART OF BUILDING

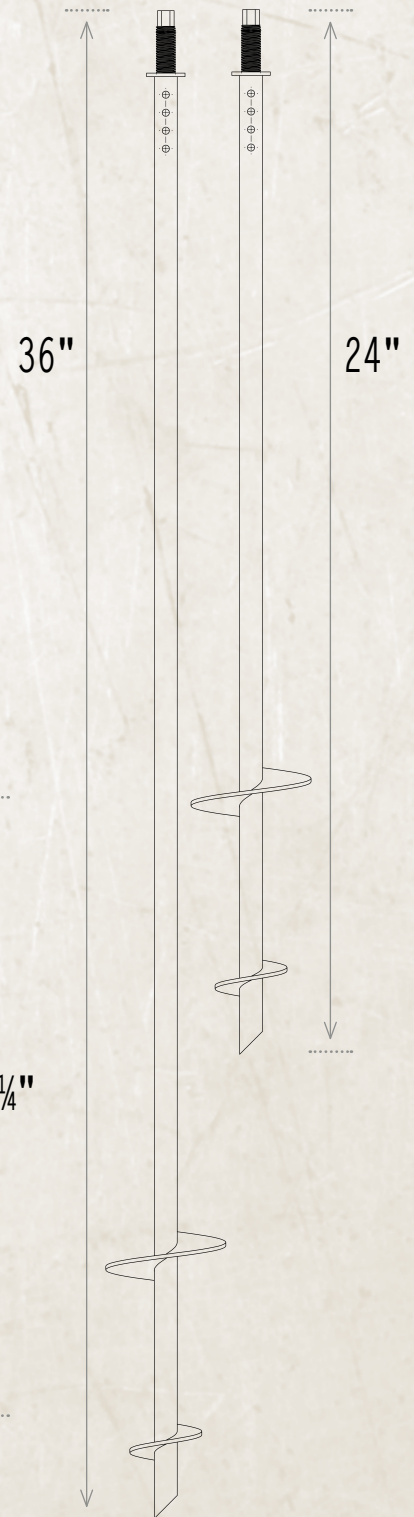


# SPECIFICATIONS | DECK FOOT ANCHOR

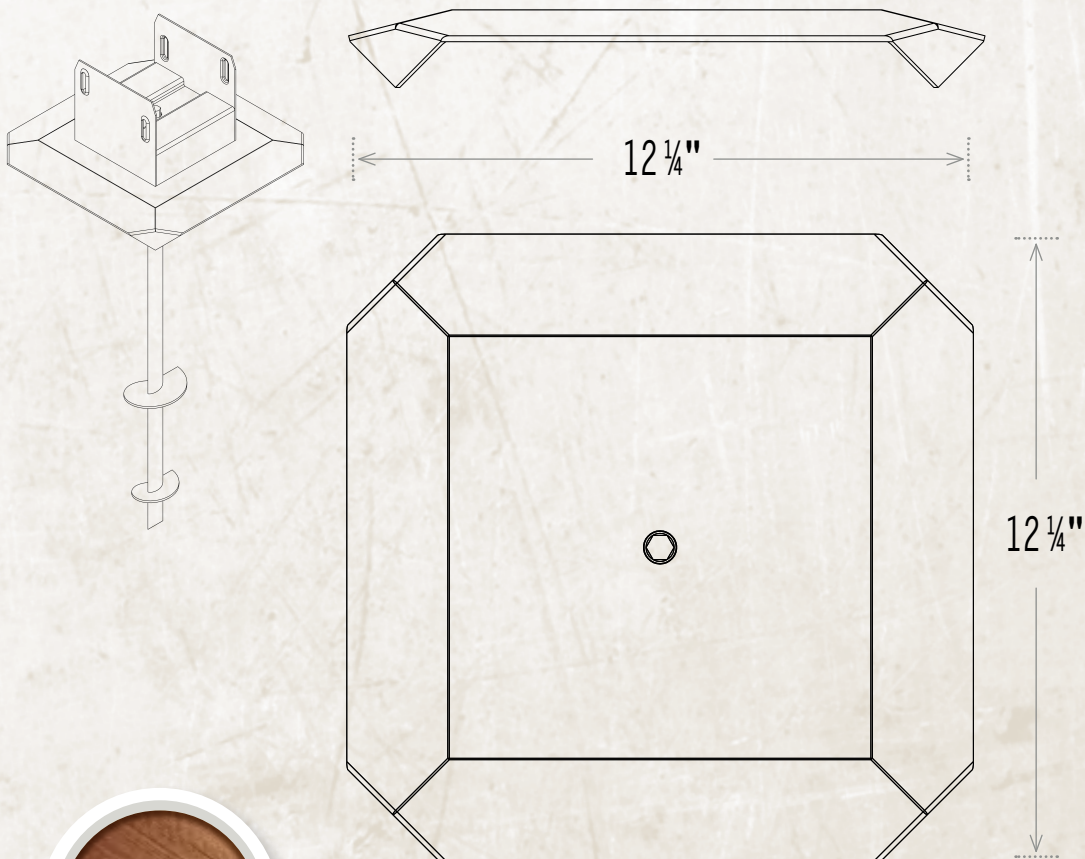
6X6 POST BRACKET



OPTIONAL AUGER LENGTHS



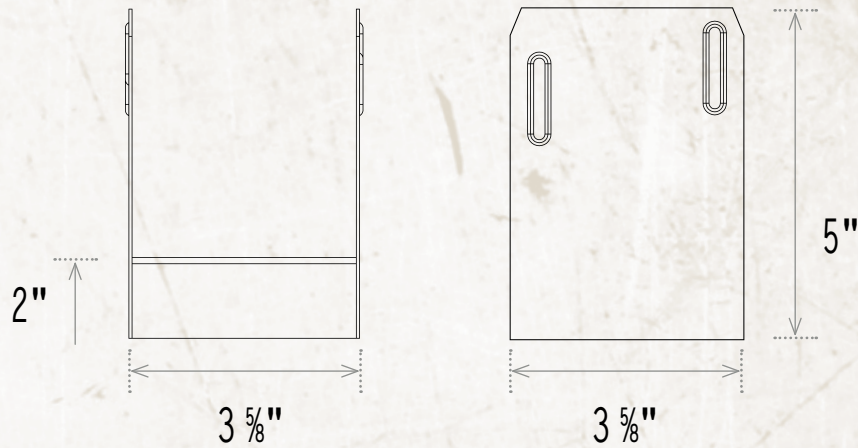
COMMON DECK PLATE FOR 4x4/6x6



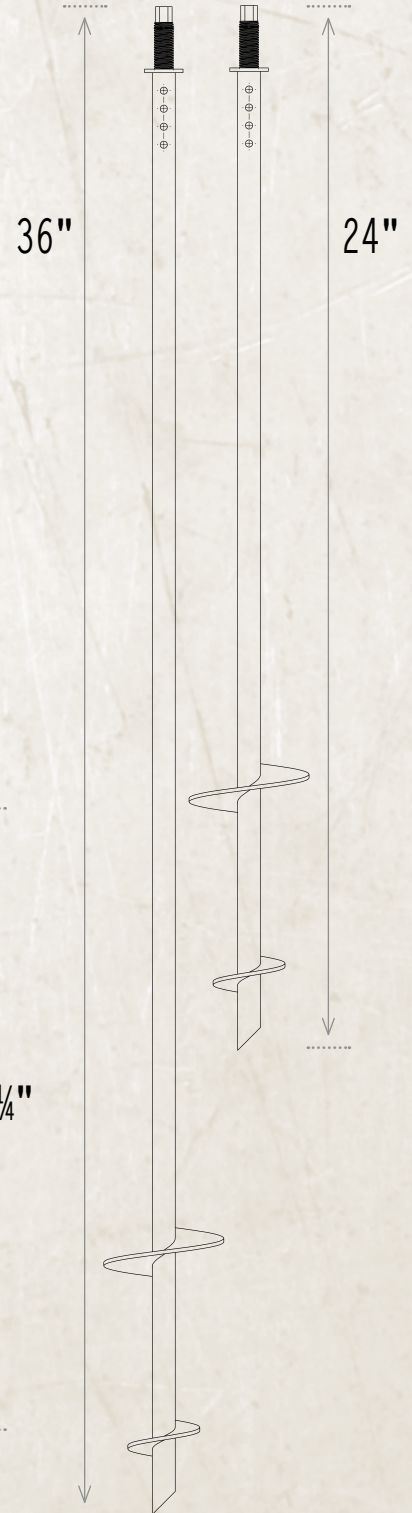


# SPECIFICATIONS | DECK FOOT ANCHOR

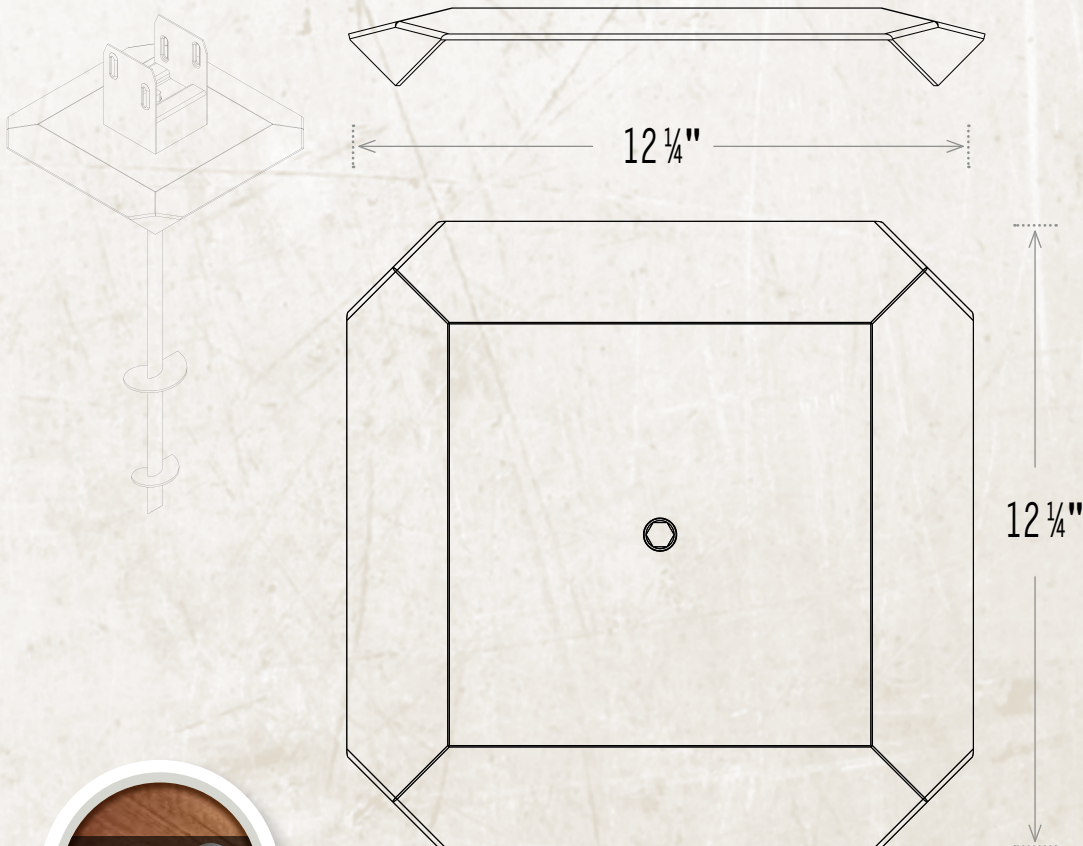
4X4 POST BRACKET



OPTIONAL AUGER LENGTHS



COMMON DECK PLATE FOR 4x4/6x6





# WATERPROOF | GASKETS



EPDM RUBBER

Your Post Anchor  
*waterproof solution.*

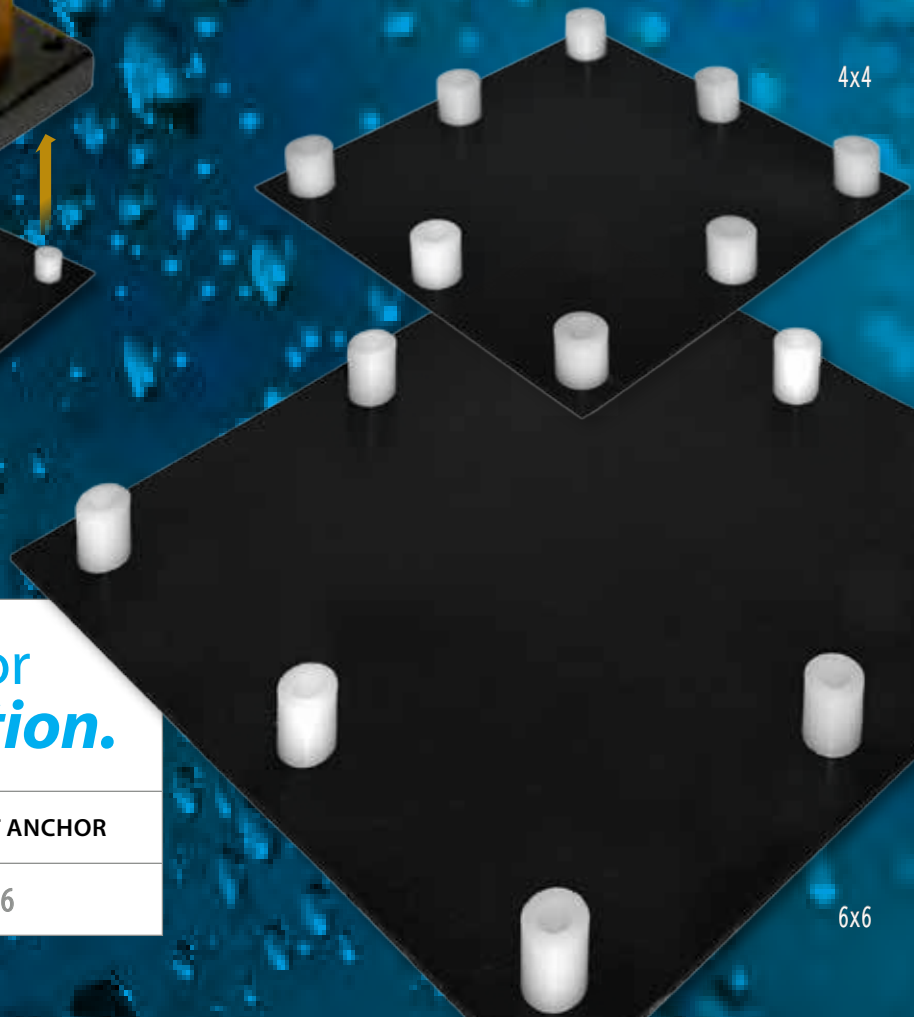
FOR 4X4 POST ANCHOR

GKB44

FOR 6X6 POST ANCHOR

GKB66

*Sold in any quantity.*



4x4

6x6

# UNIVERSAL | HAMMER TOOL



**Builders love them.**

*Evenly distributes force of hammer strike.*

FOR USE WITH OUR 4X4 AND 6X6 POST ANCHORS

HT4466



THE ART OF BUILDING





### Hole Saw and Mandrel | Kit 1 1/4"

4X4 POST PREPARATION FOR POST ANCHOR.

HSK32



### Hole Saw and Mandrel | Kit 1 3/4"

6X6 POST PREPARATION FOR TITAN POST ANCHOR.

HSK45

Titan has the **right tools** for  
***post anchor  
preparation.***

The *Hole Saw* and the *Center Guide*  
locate the center and prepare your  
wood post for a perfect fit.



### Center Guide for Hole Saw | 3 1/2"

FOR USE WITH 3 1/2" X 3 1/2" POST AND TIPR4402, TIPR4412

CG44

### Center Guide for Hole Saw | 5 1/2"

FOR USE WITH 5 1/2" X 5 1/2" POST AND TIPR6602, TIPR6612

CG66





# TITAN

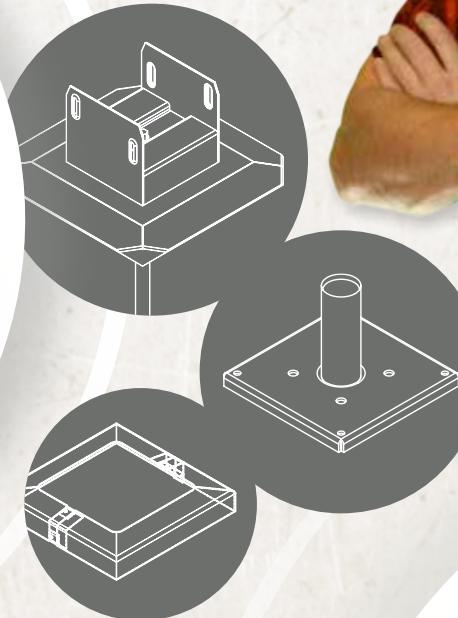
The only thing we follow is  
*our instincts.*

Two roads diverged in a wood, and I -  
I took the one less traveled by, and that has  
made all the difference.

Robert Frost



RICHARD BERGMAN



**So it has been with us...**

Since our first day, developing our first product, we felt the fear of failure. But we pressed on. And that has made all the difference for us.

**We focus on problems that need solving** and that will make a difference in your life. And if we persist and get it right, the crowd will follow us.

We just stick to our strengths and let the rest take care of itself.

If you are looking for building products  
*with a fresh approach,*  
**KEEP TITAN FOREMOST IN YOUR MIND.**

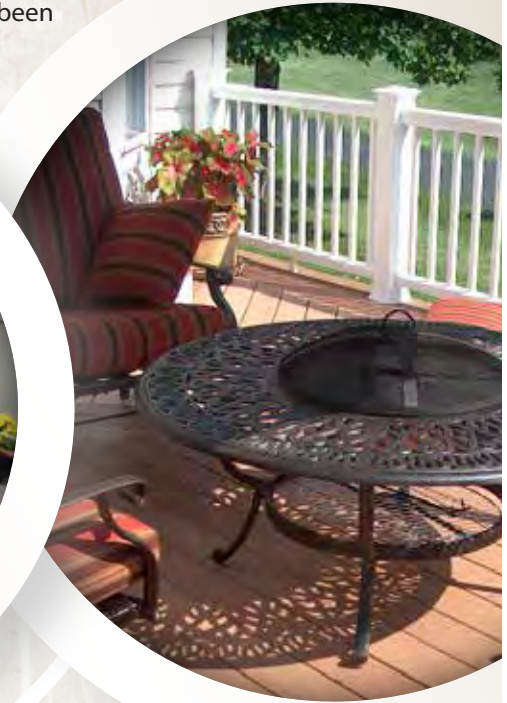
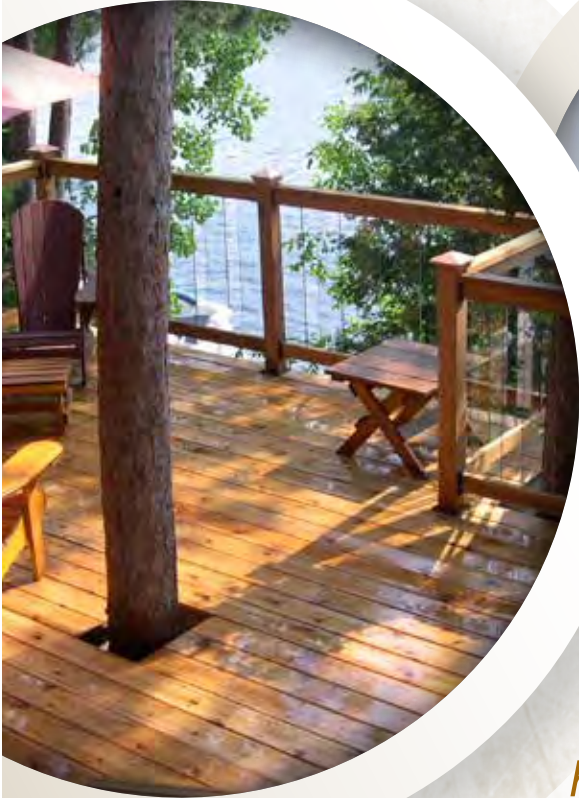




# Ideas are the seminal element of everything *we experience in our physical world.*

Rather than having to rely on years of carpentry experience, tricky building techniques or intimidating machinery, we developed and brought to market innovative and patented products like the *Titan Post Anchor™*, the *Shadow Rail Connector™* and the *Deck Foot Anchor™*.

These have become “*must have*” products for thousands and thousands of some of the most discerning homeowners and builders across North America. They have even been written about by editors of leading industry publications.



## OUR MISSION

*We want people of any skill level to build like a pro. We want pros to have solutions that speed up and simplify their work and delight their customers.*

*There is a feeling of pride you will experience when you build something that looks beautiful. Building can be brute labor or it can be an art form where attention to detail matters.*

You will find this attention in every one of our products. *We design and create solutions* that minimize clutter, simplify your task, increase the longevity of your investment and delight you.

Whether you just picked up a hammer for the first time, or you are an experienced professional, you can build projects that have a distinctly clean and elegant appearance where fasteners are minimal or hidden entirely. *This is where building becomes an art.*

**TITAN®**  
THE ART OF BUILDING

THAT'S **WHO**  
*We are.*



# Shipping is *easy* and *simple* with Titan.

We ship pallets (LTL) from east to west and north to south across the entire **U.S.** and **Canada**.

We also offer **prepaid freight** when minimum quantities are met.

MOST ORDERS  
DELIVERED IN

**7 DAYS  
OR LESS**

SHIPPED BY UPS IN  
CASE QUANTITIES



## HIT THE MINIMUM? WE MAKE IT EASY.

**3 PREFORMATED PURCHASE  
ORDERS TO CHOOSE FROM:**

### BRONZE

(768) 4x4 Post Anchors  
(380) 4x4 Post Skirts  
(400) Shadow Rail Kits

### SILVER

(768) 4x4 Post Anchors  
(380) 4x4 Post Skirt Kits  
(60) 6x6 Post Skirt Kits  
(400) 4x4 Shadow Rail Kits  
(384) 3.5" Aluminum Caps  
(72) 5.5" Aluminum Caps

### GOLD

(768) 4x4 Post Anchors  
(144) 6x6 Post Anchors  
(380) 4x4 Post Skirt Kits  
(60) 6x6 Post Skirt Kits  
(400) 4x4 Shadow Rail Kits  
(384) 3.5" Aluminum Caps  
(72) 5.5" Aluminum Caps  
(200) Deck Plates  
(200) 24" Augers  
(120) 4x4 Post Brackets  
(80) 6x6 Post Brackets



**CALL OR EMAIL US TODAY AND  
WE'LL SEND YOU THE FORMS!**



**QUESTIONS or CALL TO ORDER**

TOLL FREE **1-866-577-8868**

✉ [sdugdale@titanbuildingproducts.com](mailto:sdugdale@titanbuildingproducts.com)



# TITAN®

THE ART OF BUILDING

THE TITAN | SHADOW RAIL  
**Cut twice,  
*buy once.***



[titanbuildingproducts.com](http://titanbuildingproducts.com)

**QUESTIONS or CALL TO ORDER**

TOLL FREE **1-866-577-8868**